



Blue Mountain
Community College



Blue Mountain
Community College



Blue Mountain
Community College



Blue Mountain
Community College

**EASTERN OREGON COLLABORATIVE COLLEGES COUNCIL
WAN PLANNING**



Blue Mountain
Community College



Blue Mountain
Community College



Blue Mountain
Community College



Blue Mountain
Community College



Blue Mountain
Community College



Blue Mountain
Community College



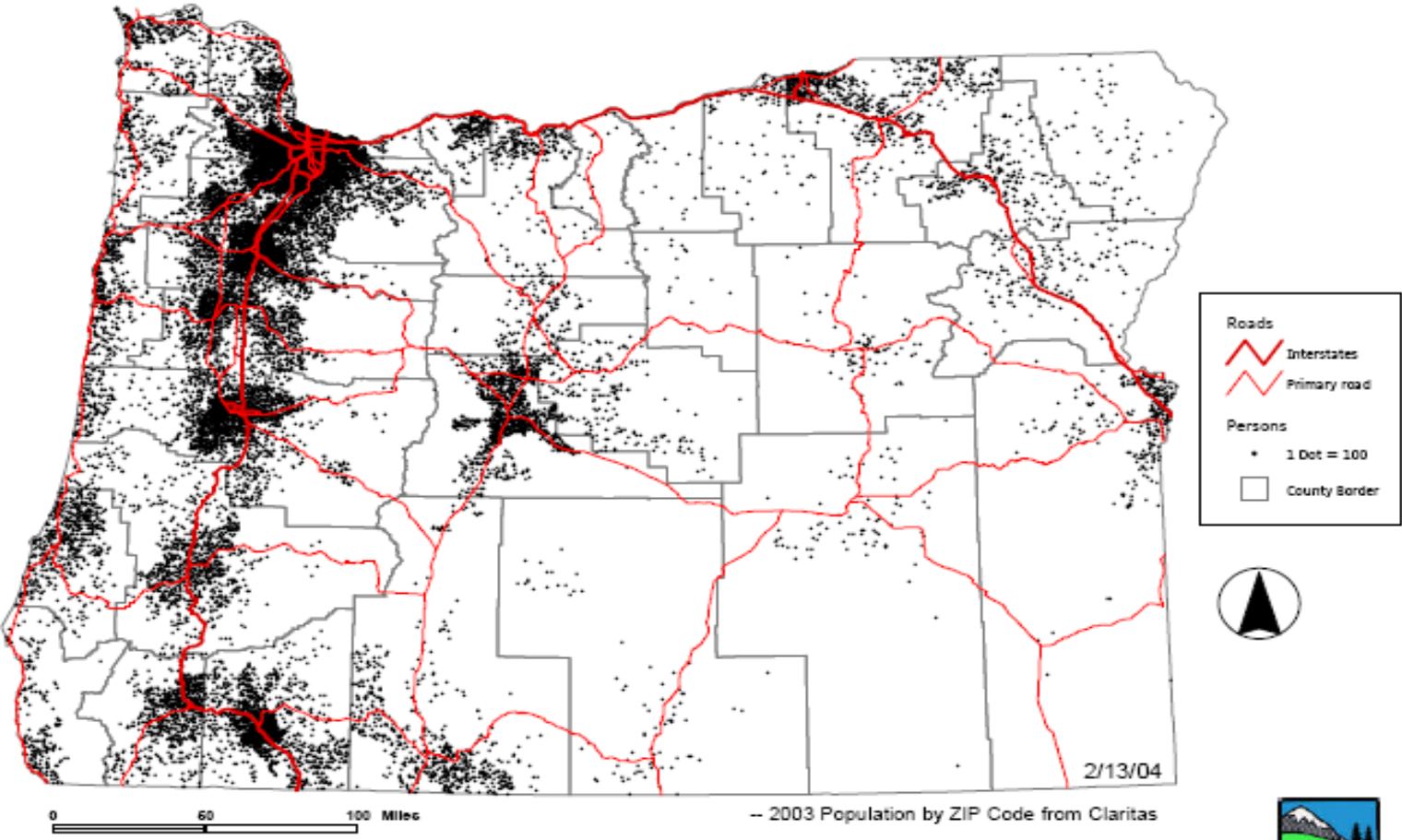
Blue Mountain
Community College



Blue Mountain
Community College

EASTERN OREGON COLLABORATIVE COLLEGES COUNCIL WAN PLANNING

2003 OREGON POPULATION DENSITY



OREGON OFFICE OF RURAL HEALTH



EASTERN OREGON COLLABORATIVE COLLEGES COUNCIL WAN PLANNING

- **BACKGROUND:** The Eastern Oregon Collaborative Colleges Council (EOCCC), a consortium of:
 - **Blue Mountain Community College (BMCC)**
 - **Eastern Oregon University (EOU)**
 - **Treasure Valley Community College (TVCC)**

EASTERN OREGON COLLABORATIVE COLLEGES COUNCIL WAN PLANNING

- **BACKGROUND:**

11 Eastern Oregon
Participating Counties



EASTERN OREGON COLLABORATIVE COLLEGES COUNCIL WAN PLANNING

- The three colleges offer student access to education and workforce training through a regional distance education system.
 - EOU offers the most comprehensive programming.
 - Each institution has its own distance strategy and infrastructure including connectivity to some, but not all, high schools in their districts
 - Yet there remain many communities and areas that have no remote access to any of the three institutions.

EASTERN OREGON COLLABORATIVE COLLEGES COUNCIL WAN PLANNING

- **BMCC, EOU, and TVCC** are working to increase student access to education and workforce training.
 - through development of a collaborative, regional distance education and workforce training system.

EASTERN OREGON COLLABORATIVE COLLEGES COUNCIL WAN PLANNING

- To expand educational and workforce training opportunities throughout the region and to leverage increasingly scarce resources the EOCCC is considering:
 - interconnecting its three distance education systems.

EASTERN OREGON COLLABORATIVE COLLEGES COUNCIL WAN PLANNING

- This planning grant will allow EOCCC to investigate various cost-effective technologies that could support an interconnected distance education system that also incorporates workforce development organizations.

EASTERN OREGON COLLABORATIVE COLLEGES COUNCIL WAN PLANNING

- **GOAL:** The goal of this WAN Planning Project is to:
 - expand the geographic scope and the types of distance education services
 - to increase regional access to postsecondary education, workforce training, and K-12 pathways to college
 - for the rural, low-income, underserved population of Oregon.

EASTERN OREGON COLLABORATIVE COLLEGES COUNCIL WAN PLANNING

- **PHASE (1):** A composite regional WAN needs assessment will be compiled from:
 - existing information and
 - by updated assessments that were previously conducted by individual entities
- to determine regional needs for and
- challenges of implementing an interconnected distance education system in Eastern Oregon.

EASTERN OREGON COLLABORATIVE COLLEGES COUNCIL WAN PLANNING

- **PHASE (2):** A comprehensive inventory of existing functional capabilities will be compiled as the basis for establishing current capabilities.

EASTERN OREGON COLLABORATIVE COLLEGES COUNCIL WAN PLANNING

- **PHASE (3):** Focus of the study will be to investigate the feasibility of various cost-effective technologies to support a possible interconnected system for Eastern Oregon.

EASTERN OREGON COLLABORATIVE COLLEGES COUNCIL WAN PLANNING

- **OUTPUT:** This planning project addresses substantial and documented community needs with the long-term goal of expanding the geographical scope for:
 - increasing and improving educational and
 - workforce training services to low-income and underserved populations in Oregon.

EASTERN OREGON COLLABORATIVE COLLEGES COUNCIL WAN PLANNING

- Implementation of the recommended solutions will be subject to additional funding and will be a future 3-year project.

EASTERN OREGON COLLABORATIVE COLLEGES COUNCIL WAN PLANNING

- **CONTACT:**

- Larry Bundy, Chair, Oversight Group.
541-278-5892; lbundy@bluecc.edu

- Ken Usiak, Project Coordinator.
541-278-5825; kusiak@bluecc.edu